

# STUDIO 4

WICHITA  
HAND  
WEAVERS

SPINNERS & DYERS

Hopefully most of you have had the opportunity to take in the Kansas Fiber Directions '82 show, either as a participant, or as a viewer, but since the weather hasn't been very cooperative and there's the problem of distance for some, I want to share with you Peg McNair's Juror's Statement from the catalog:

## Juror's Statement

For art in fiber, the standards are the same as for art in any medium. The concept (idea, statement) must be clear, fully conceived and well executed. The artist aims for unity and integrity of the whole and the best works transcend the medium. The art works in this, as in any juried show, are the ones I feel come closest to achieving this goal — the ones which reach toward it, difficult as it is.

Fiber also has an historical tradition, with function as an inherent goal. The creator of a rug, garment or table linen is not "first" a craftsman, however, but a designer as well. Effective functional work should also have a clear intent, be fully conceived, well executed and aesthetically fresh — within the limits of the function, which it must perform well.

In Fiber Directions '82 there are several works which are very fine pieces indeed, and the others show effort to reach the above goals. However, I would like to see from the artists a broader range of ideas and a more personal and deeper exploration of their concepts. From the designer/artisans, whose craftsmanship is quite fine, I would like to see more consideration of color and design and more original approaches in works with a functional intent.

Peg McNair

Those of us that were able to take the Color and Design workshops perhaps have a better idea of what Peg has in mind. I remember at one point, she said that we in the Midwest are somewhat behind other areas of the country, in that we tend to over-emphasize "Flowers", and "Prairie Scenes". There was a lot of this in our show, but it was of a very high quality, and not what she would consider merely "illustrations".

MARCH, 1982

VOLUME I, NO. 8

STYLE

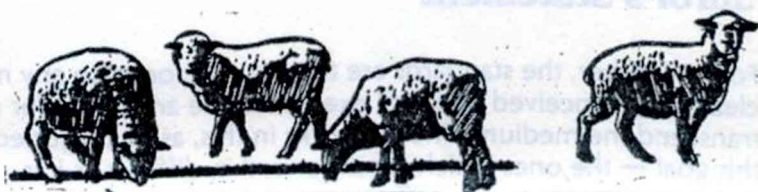


Peg feels that the more abstract applications of design has a more universal appeal, and that it evokes a personal response in more viewers - allowing them to be drawn into the design with their own interpretations. This is more creative, and it's risky business, in a way, because naturally, we want the idea to "come across" as it was conceived. But perhaps this is what Peg urges us to reach for. I love the tapestries of the Flint Hills, or our beautiful prairie skys, but maybe this is "too easy", maybe this is not using our fullest potential as weavers, or as viewers.

I travel alot, and see alot of fiber art around the country. Always, I've liked the literal translations of landscapes in tapestries - but maybe I haven't looked with a critical eye, or an inquiring purpose before. . . It'll be interesting to see what new directions my taste in fiber art takes! (Maybe none at all!)

So, as usual, we have something new to work on, something new to look for, some new growth to take place.

Barb Ratner, President



FROM MIRIAM PACK:

For Display Committee:

Just a reminder: Don't forget to bring your snapshots and/or samples of the February 1981 Fiber Directions show, the Weave Around, mini-workshops and Bette Hochberg Spinning Workshop. Leave at Studio 4 on shelves "under the clock."

If you have a finished fiber piece you'd like to share with us in Studio 4, we'd like to display it for a minimum or maximum (2 months) time. Call Miriam Pack at 682-3910, or leave your name and description of item on DISPLAY/STUDIO 4 list on our bulletin board.

FROM CAROL JONES:

Those of us in the Color Study Group extend an open invitation to anyone interested to join us on Thursday, March 11, at 1:30 p.m. at the Ulrich Museum on the WSU campus for a tour of the color theory display on exhibit. We are to be introduced to the Ulrich and can then view this timely exhibit, which is self-explanatory in its presentation. I was particularly excited to find several panels which covered color theories of Itten and Albers as presented by Peg McNair in her color workshop and further explored by our study group. Won't you come join us?

LET'S GO



### SUGGESTION:

It has been suggested that two slides be taken of each piece in the Kansas Fiber Directions '82 show, including a closeup of each piece. One set of these slides would be for our Guild library and another set would be sent to Handweavers Guild of America for their library. Those who have had their cameras clicking might want to collaborate.

### SYMPATHY:

Is extended to Beryl Corkill whose husband recently passed away. Beryl is a member of our Guild and proprietor of The Heritage Hut.

### MINUTES OF THE WICHITA HANDWEAVERS, SPINNERS AND DYERS' GUILD MEETING      FEBRUARY 10, 1982 (reschedule of February 3 meeting)

Tapestry slides from Handweavers Guild of America were shown to Raye Stevens, Carol Knox, Jan Holmer and Pam Achenbach and were enjoyed by all.

Respectfully submitted,

Pamela Achenbach

P.S. Inclement weather seemed to be a factor in attendance.

## **CURRENT & COMING**

### UPCOMING MARCH 3, 1982 GUILD MEETING:

Becky Johnson-Kuntz reports that the program will be a video cassette tape originally from the Smithsonian that the Butler County Junior College has videotaped for their collection. It is entitled "Femme/Woman: A Tapestry by Joan Miro." It runs 15 minutes and documents the project from its production in Spain through the installation in the National Gallery of Art in Washington. The program will center around this Miro piece as well as other documented pieces in our area and around the country that our program chairmen and others will research for us. This should be a presentation of interest especially while enthusiasm and interest are high following our own Kansas Fiber Directions '82 show.



FROM CAROL JONES:

I would like to call your attention to the Fall and Winter '81 and '82 KAWS (Kansas Alliance of Weavers and Spinners) newsletter which is posted on the bulletin board in Studio 4 (after I return it, that is). A copy of the constitution and by-laws of KAWS is posted on our bulletin board. Our space precludes us from reproducing both in our newsletter so please take time to familiarize yourself with KAWS purpose and operation, and especially before the annual meeting on Saturday, April 17, 1982, in Great Bend. The Cottonwood Fiber Guild has invited each of us to attend this meeting entitled "Spring Potpourri" which will be held at the Elks Club Lodge, 1120 Kansas. Ellen Schumacher will be featured speaker with her lecture to emphasize symbolism in fiber design.

Registration begins at 10 a.m. followed by her lecture, luncheon and state board, business meeting, clothesline fashion show and concluding with guild displays and sharing through 4 p.m. Cost of \$7 for the Potpourri will cover the luncheon and other conference expenses. The fee and completed registration form should be sent by March 20, 1982, to: Cottonwood Fiber Guild  
2421 Walnut Dr.  
Great Bend, KS 67530

Any questions, phone 316-792-5528.

We have been asked to bring handwoven garments and accessories for a clothesline Mini Fashion Show. Each guild is asked to have an attended display and will be allowed one table. We could have pieces from individuals or study groups, explanations on how the work was executed and other items of interest. Be thinking of what you can contribute for this display.

For further information see copy of invitation posted on our bulletin board in Studio 4.

---

#### Other KAWS matters:

The following questions have been submitted to us in the Fall and Winter '81 and '82 KAWS newsletter:

Do you know of people who are willing to have programs for guilds out of their own city?

Would the person be willing to share the knowledge for free?

Does that person need expenses paid? How much?

Would guilds be willing to exchange programs on an even basis?

I would appreciate response to these questions from anyone interested. As our guild representative to KAWS, I will submit answers to their editor for coordinating by another person. Please call me at 744-0821 or see me at the March guild meeting. I would like to accomplish this task in time for the Great Bend meeting in April.



KANSAS ALLIANCE OF WEAVERS AND SPINNERS  
BY-LAWS

1. Members of a Guild belonging to the Alliance are automatically General Members and are entitled to vote at General Membership meetings. Individual members are entitled to the same voting rights at General Membership meetings.
2. Individual members are not entitled to representation on the Board of Directors. An "established group," or guild, shall consist of three or more members.
3. Each guild or group is entitled to two members on the Board of Directors. One shall be elected as the voting member by the local guild, the other shall serve as alternate. In case neither can attend a particular Board meeting, the guild president may appoint a member to act in their place.
4. The dues schedule for member guilds shall be \$5 (five dollars) for up to five members, and \$1 (one dollar) per person over five. Individual memberships are \$5 (five dollars).
5. The Officers of the Alliance may be chosen from among the members of the Board or from the General Membership. In either case, they shall be considered full members of the Board.
6. Officers will be elected at a Board meeting in the spring of each year. If re-elected, they may succeed themselves.
7. Board members shall be elected by their guild for a one year term beginning and ending in the spring of each year.
8. The fiscal year shall be from October 1 to September 30 of the following year. Dues for the year are due January 1.
9. The official mailing address is Kansas Alliance of Weavers and Spinners, c/o Naomi Soeken, Route 1, Claflin, Kansas 67525.
10. Expenses incurred by individuals in carrying out the purposes of the Alliance may be reimbursed upon majority vote of the Board.
11. The by-laws may be amended by majority vote in any General Membership meeting or meeting of the Board of Directors.



**HERITAGE HUT**

803/PEACH TREE

682-4082

Tahki, Stanley Berroco, Navajo Wools,  
Unger, Reynolds, and mill ends.

2-ply mill end rug wools - \$8 lb.

Clothing workshop starts March 24,  
Phone for reservations.

We are Leclerc loom dealers to serve  
your weaving needs.



FROM MARY DUSENBURY:

Orange Fruitcake (New York Times Cookbook, p. 556, but doctored up a bit)

2 1/2 C. sifted cake flour (I use unbleached white)      2 C. granulated sugar  
1 t. baking powder      2 eggs  
1/2 t. salt      1 t. soda  
6 1/2 oz. chopped pitted dates) be generous!      1 C. buttermilk  
4 1/2 oz. walnuts, chopped )      1 t. vanilla extract (I use 1/2)  
1 C. butter      grated rind and juice of 2 large oranges

(I add to this 1-2 t. almond extract, 2 t. dried orange peel, and a healthy swig of rum.)

1. Preheat oven to slow (300°F) and grease a 10" tube pan (I use a round cake pan)
2. Sift together flour, baking powder, and salt. Stir several teaspoons into the chopped dates and nuts.
3. Cream butter until smooth, gradually adding 1 cup sugar. Add the eggs, one at a time, beating well after each addition.
4. Stir the baking soda into the buttermilk and add to the creamed mixture alternately with the flour mixture.
5. Add vanilla (and almond extract and some rum) dates, nuts and orange rind (& dried orange peel) and mix well. Pour into pan and bake one hour and twenty minutes.
6. Meanwhile (near the end), boil together the orange juice and remaining one cup sugar. Add a swig of rum just before cake is done. When cake is done, pour over the top (slowly). (Let cool and soak in pan.) (I usually then remove from pan, dust with powdered sugar and, just before serving, garnish with orange slices)

Note: NYT Cookbook says this cake will keep 2-3 weeks wrapped in saran or tinfoil and stored in refrigerator, but ours never has a chance!  
Happy baking!

Those who were at the Christmas luncheon may remember this handsome dessert.

cmj

## UNIQUE YARNS

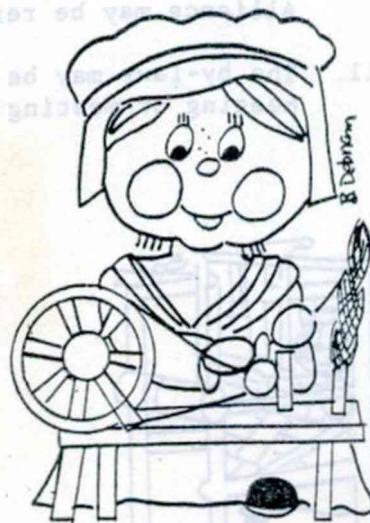
Our studio specializes in  
hand dyed wools, bouclés,  
mohair and handspuns. Try  
us for something different!

Open by appointment

Donna and Susan Todd  
The Handweavers Shop

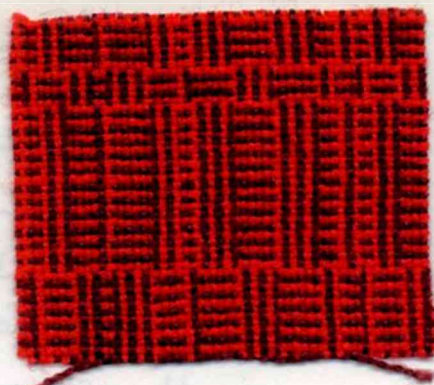
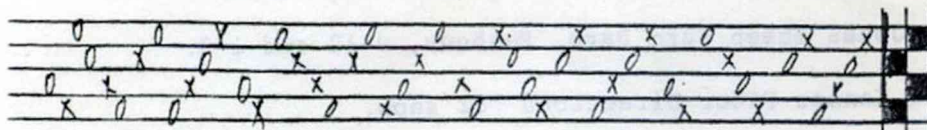
2331 N. Grant Rd.

ph 733-2963      Wichita, KS.





Project Winter Carnival  
Design Source Helen Canzonari  
Sett 24 ep, Sley 2 Reed 12 dent  
Warp Width 40" Warp Length as needed  
Threading and Tie-up Draft



X= Dark      O= Light      Weft is same as warp.

TREADLING: Woven with Tabby treadles, following color arrangement in draft. Weft put in sheds Log Cabin fashion. Ex: Light is alternated with dark. When design changes, a double shot of last color is thrown, reversing the order of color shots. This is determined by order light and dark were threaded in draft.

This fabric is unique in that the Log Cabin construction has been developed on a broken twill (dornick) threading.

## **"IN THE NEWS"**

### "MORE WOOL":

Quoting from the February 3, 1982, Wichita Eagle-Beacon,

"Six lambs, born as two sets of triplets to a single ewe in Augusta Monday, make quite a flock . . . The sets of triplets were born 27 hours apart, which Cliff Spaeth, sheep extension specialist at Kansas State University, says meant that they developed in a split reproductive tract. 'Each portion of the uterus must have been acting independently in the lambing process,' he said. 'That puts it in the more remarkable category . . . It's safe to say that's never happened in the state of Kansas and maybe never before at all.'"

One of our Guild members has work of hers in an exhibit at the Clayton H. Staples Memorial Gallery on the WSU campus. She is Marla Weyand, and she is one of the more than 30 alumni who are featured in an exhibit which honors the 25th anniversary of the graphic-design program started by Clark Britton. Quoting from the Wichita Eagle-Beacon, "The department offers photography, typography, design and drawing and provides on-the-job apprenticeships with Wichita firms. . . The gallery, on the second floor of McKnight Art Center, is open from 10 a.m. until 3 p.m. Monday through Friday. It also is open from 7 until 9 p.m. on Wednesday. There is no admission." The show is up through March 12.



## UPCOMING CALENDAR:

- March 3 Guild meeting, 7:30 p.m.
- 4 Color Study Group, 10 a.m.-noon (sack lunch optional)
- 6 Spin-In at Jones Sheep Farm Barn, Peabody, 9-12 and 1-3.
- 7 Last day of Kansas Fiber Directions '82 show.
- 11 Color Study Group, 10 a.m.-noon (sack lunch optional)
- 11 Tour of Color Theory Display at Ulrich Museum on WSU campus, 1:30 p.m.
- 12 Daytime spinning meeting, noon on, bring sack lunch & wheel.
- 12 Check out of all hand-delivered work in Kansas Fiber  
& 13 Directions '82 (or work not accepted) at Wichita Art Museum both days but no later than 4 p.m. the 13th.
- 16 Spinning meeting, 7 p.m.
- 17 ST. PATRICK'S DAY
- 20 Deadline for registration to Spring Potpourri, the annual Kansas Alliance of Weavers and Spinners meeting to be held April 17, 1982
- 20 SPRING begins.
- 26 Daytime spinning meeting, noon on, bring sack lunch & wheel.



## FROM ANN ENIX:

She has called to remind us of the two scheduled workshops. She has lots of material on Noël Bennett (Navajo weaving workshop). Call Ann at 722-2312 for details. (Oct.)

Displays are still up in Studio 4 concerning Kaethe Kliot's proposed workshops for May '83. Please mark your preferences for study on those charts or reply by phone to Ann. She needs to know by no later than the March Guild meeting to get this booked for us.

Let's help our workshop people by giving them the input they need.

## LIBRARY REMINDER:

# BOOKS!!

Books checked out of our Guild library are due one month after checkout date.

TRY TATTING



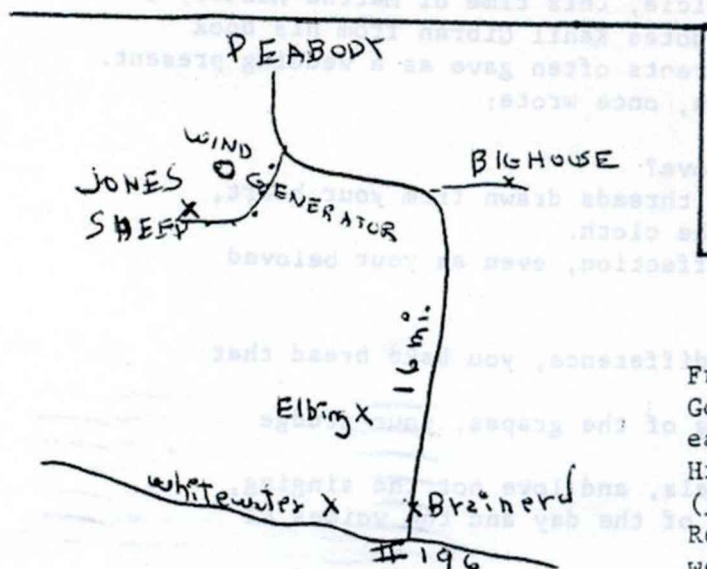
FROM MARILYN JONES:

Spin-In will be on Saturday, March 6.

This will be in our new barn.

Dress accordingly; there is no heat

From I-35 out of Wichita to Newton,  
then east on Highway 50 to Peabody



PEABODY  
Highway 50

SANTA FE

COOP

BRIDGE

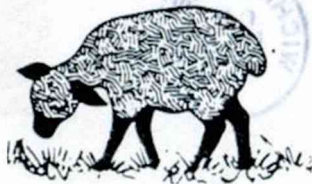
JONES  
XSHEEP

- OR -

From the Wichita Art Association--  
Go north on Webb Road to Comatara sign, go  
east and intersect Furley Road, go north to  
Highway 196. Go by Whitewater to Brainerd  
(just a spot with elevator), go north by  
Remington School for 16 miles. The road curves  
west, straight for about 1 mile, then curves back  
north. Turn south (left) on this dangerous curve.

FROM LILLIAN RUBERSON:

Notice to Spinners:



Daytime meetings, Fridays, February 26, March 12  
and 26, at noon. Bring your lunch and wheel to  
Studio 4. We'll have lunch and spin.

Regular spinning meeting, Tuesday, March 16, 7 p.m.,  
in Studio 4.

Spin-in at Jones Sheep Farm Barn, Peabody, Kansas, Saturday, March 6, 9-12 and  
1-3 p.m. Learn about different breeds of sheep and the spinning wools they  
produce. Bring your wheel, carders, plastic bags, magic markers, and your  
lunch. Fees: \$7 for the class plus amount of wool you purchase. If you've  
never spun fleece direct from the freshly sheared sheep, here's a great  
opportunity.

Name \_\_\_\_\_

Address \_\_\_\_\_

Fee: \$7.00

Reserve your spot by filling out and returning to: Lillian Ruberson  
1112 Barlow  
Wichita, KS 67207  
(316) 683-6909

**ENROLL NOW**





CLOSING NOTES FROM CAROL JONES:

It seems the bad weather has come and gone. We had some postponements but managed to reschedule and have Guild activities notwithstanding.

Once again I choose to quote from an article, this time of Martha McCurry's in our Wichita Eagle-Beacon, where she quotes Kahil Gibran from his book The Prophet. That book is the one my parents often gave as a wedding present. The author, who has been dead fifty years, once wrote:

"And what is it to work with love?

"It is to weave the cloth with threads drawn from your heart, even as your beloved were to wear the cloth.

"It is to build a house with affection, even as your beloved were to dwell in that house.

"Work is love made visible.

"For if you bake bread with indifference, you bake bread that feeds but half man's hunger.

"And if you grudge the crushing of the grapes, your grudge distills a poison in the wine.

"And if you sing though as angels, and love not the singing, you muffle man's ears to the voices of the day and the voices of the night."



Wichita Handweavers, Spinners & Dyers  
c/o Carol Jones, News Editor  
4518 Dundee  
Wichita, KS 67220



Martha Crowley  
339 N. Poplar  
Wichita, KS 67214