

GUILD MEETING

7:30 p.m.

February 3

WICHITA ART ASSOCIATION

STUDIO 4

STUDIO

WICHITA
HAND
WEAVERS

4

SPINNERS & DYERS

My days are swifter than a weaver's shuttle . . . Does that sound familiar? Actually, it wasn't overheard in our weaving circles, but is from the Book of Job. Can't believe it's newsletter time again. When I proposed we have a newsletter last year, just didn't realize the end of the month would come around every 30 or so days. . . all this eagerness to weave, and Carol and I are absurdly at our typewriters!! This month has really taken flight. There was so much to do in so little time. Kansas Fiber Directions is ready to open and Peg McNair has been here and gone. She left our heads spinning with color theory and design elements, and now, new warps, like excited children, are clamoring to be put on the looms!

*You are cordially invited to attend
the opening reception for
Kansas Fiber Directions '82*

*Sunday February 7, 1982
2:00 - 4:00 p.m.
Lower Level Gallery
Wichita Art Museum, 619 Stackman*

*Exhibition Dates:
February 7 - March 7, 1982
10 a.m.-4:50 p.m., Tuesday - Saturday
1-4:50 p.m., Sunday*

*Presented in part by the Kansas Arts Commission, a state agency, and
the National Endowment for the Arts, a federal agency.*

The workshops on color and design were outstanding, but it was pushing creativity to the limit to come up with new ideas for free-studies in each class every day - and have them be critiqued by the whole class!

One of the things that Peg stressed in her lecture on "How To Critique your Own Work" was the need of a support person to provide feed-back and encouragement. She said the ideal person would be another weaver, since that individual would be aware of the problems of execution, as well as an objective design and color observer. This is one of our most important benefits in the guild - but one that we don't use often enough. Let's bring more of our work to meetings for evaluation and discussion, or maybe some well-earned praise. We're really overlooking all the Show and Tell advantages we have. . . .

Another thing Peg said was important was to have a STASH BOX for saving clippings, sketches, or anything else that caught your eye. When you need ideas for color or designs, just sift through the contents of the box, and maybe once a year throw out anything that hasn't worked, or been helpful. This is the first step in what she calls the evolvement of design.

She suggests putting your designs up somewhere that you'll be in contact with on a daily basis to see if you can live with them. She says you'll probably start to know in 3 days if it's a good design, and if it still pleases you in 3 weeks, it's more than likely going to be something you can use. She said the shortest time it ever took her to do a good design was 10 minutes, and the longest time was 2½ years. So! Patience! Take time to get response from your support person.

Hope everyone is planning to attend the reception at the Museum on February 7 for the opening of Kansas Fiber Directions. Bring or invite all those people out there who wonder what it is you really do with your "spare time". . . .

There were over a hundred entries from all over the country, and those in our guild who were accepted were - Pam Achenbach, Mary Dusenbury, Becky Gaskill, Marilyn Grisham, Carol Jones, Esther Kolling, Mary Sanders-Milbrandt, Irene Owen, Miriam Pack, Joan Prater, Barbara Ratner, Ramona Stevens, Jenny Tasheff, Donna Todd Mary Ellen Williford, and Lynne Ziegler.

The show will run from February 7 to March 7. This is the best way we have to show the public what we do, and why we do it. I was at a Superbowl party, and most of the people there were those I had worked with in politics. One gal came up and asked where I was working now, and when I told her I was weaving, and about the guild, and the up-coming show, etc., etc., she looked at me with alarm and said "How sweet" and found someone more to her liking to talk to. It's so annoying to not be taken seriously! It's like the old stories about basket-weaving being the final therapy in a rest home! But we can change the Public's awareness of the Fiber Arts through our show and other contacts. . . just have to pick the right people to talk to! (And by the way, isn't functional weaving art when it's done with sensitivity and beauty?)

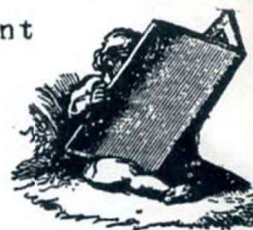
Those of you that haven't had a chance to look over the Topeka Newsletter yet, be sure and check out the limerick Paul Pruyser wrote to Jans, upon the gift of a Niddy Noddy for Christmas. It's really hilarious!

Hope to see everyone at Guild Meeting on February 4. The program will be H.G.A. slides on tapestry. Pam says Joan Hall, who wrote Mexican Tapestry Weaving, is included, as well as Miro, and exhibits from the Lausanne Biennale. This should have particular significance for us this month.

But now, on with the newsletter . . .

Barb Ratner, President

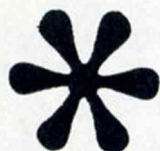
Fiber to fabric



KANSAS FIBER DIRECTIONS '82 SHOW:

Judging of pieces was done by juror Peg McNair on January 16. A show catalogue is being prepared by Ramona Stevens and Jennie Tasheff. The Wichita Art Museum donated the amount they would usually spend on show brochures toward our catalogue with the stipulation that there be no charge for them. Countless hours have been put in by many toward the success of our second Fiber Directions show. A big "THANK YOU" to Mary Ellen Williford and her helpers for their many hours of hard work. Guild hostesses will be on hand Sunday, February 7, to assist during the opening reception being held from 2-4 p.m. Recipients of the five cash awards will be announced during the reception. Let's support the efforts of many and share in this successful show. Exhibition dates are February 7 through March 7. See special invitation on front page of newsletter for hours at the museum.

Reminders: Work not accepted may be checked out between 9:30 a.m. and 4 p.m. on January 30. Checkout of works in exhibition is to be March 12 or 13th no later than 4 p.m. the 13th. Work not accepted can also be picked up on these dates.



To those who signed up to work the reception. Anyone else wishing to help can call Irene Owen at 683-0969.

ADD TO YOUR LIST OF MEMBERS:

Carol Knox
5413 E. 3rd Street
Wichita, KS 67208
683-2869

Laura Witherspoon
4215 Westport
Wichita, KS 67212
942-2342

Donna Todd
2331 N. Grant Rd.
Wichita, KS 67228
733-2963

Susan Todd
2331 N. Grant Rd.
Wichita, KS 67228

Telephone numbers for:

Rebecca Murray
733-1286

Jan Holmer
686-5153

Minutes of the Wichita Handweavers, Spinners, and
Dyers Guild Meeting January 6, 1982

The meeting began at 7:45 pm with 28 members and guests in attendance.

Mary Ellen brought everyone up to date on the Fiber Directions show. The opening will be held on February 7th with a reception given by the Friends of the Wichita Art Museum, and the members of the Wichita Guild. The cost of the catalog is being partially underwritten by a grant from the Kansas Arts Commission, and the Art Museum. The Guild allotted \$50.00 from our treasury to be awarded to the piece that receives the most votes from Handweavers Guild members. Voting will be the 18th of January. The exhibit will be hung from Feb. 7th to March 7th at the Wichita Art Museum, and there will be demonstrations for 4th grade children on weaving and spinning.

Peg McNair will be in Wichita to judge the Fiber Directions show and to give workshops on both Color and Design. Lillian mentioned that she was disappointed that the workshops had low sign-ups, and encouraged everyone to think about taking them.

Peg McNair will give a public lecture, Saturday the 16th at the Wichita Art Association. It will cover the topic of Critiquing Your Work.

Sara McDonald gave the Treasurer's report. As of 1/5/82 the balance in the Guild account was \$1348.49.

Ann Enix told us that the Klot workshop on Bobbin lace will be in May or June 1983.

Miriam Pack asked for pieces that were exhibited in last year's Weave Around to decorate the room. The felting and warp painted pieces were taken down and the owners may take them home.

After a brief break for refreshments, slides were shown from the Handweavers Guild of America. They were Macro photographs of butterfly and moth wings, and opals. It was hoped that they would help inspire the people who were in the Peg McNair workshops.

The meeting was adjourned at 9:55pm.

Respectfully submitted,

Pamela Achenbach



From Joan Prater this tip: When you need filler for weaving your headings to spread out your warp, use TOILET PAPER. It's always available, and works beautifully.

A Hint from Bette Hochberg: If you're weaving with silk and having trouble with static electricity, place a pan of warm water on the floor under your loom. She says it really helps.



FROM MIRIAM PACK:

The Display Committee is asking for your help with our next "show and tell" on the twin boards in the back of the Studio. Theme: Fiber Directions '81, the Weave Around and Bette Hockberg's Spinning Workshop of February 1981. We are looking for the following:

- Snapshots taken of Fiber Directions '81 exhibits;
- Snapshots or samples of work done in the mini-workshops and snapshots taken during the Weave Around;
- Samples of work done in the Spinning Workshop with snapshots of participants and Bette Hockberg.

If you have any of these, please bring to the Studio and leave on the "in-coming" shelves under the clock.

About those green plants: Only three Guild members indicated a willingness to care for plants at the Studio. We need a minimum of 6, and preferably 12 members to institute this plan:

1 or 2 members responsible for watering and feeding plants for one month period, every 6 months. In other words, during one year, your responsibility would cover only 8 $\frac{1}{2}$ weeks, and the choice would be yours, as much as possible. If you would like to see plants hanging in the north windows, consider giving a little time to this project!

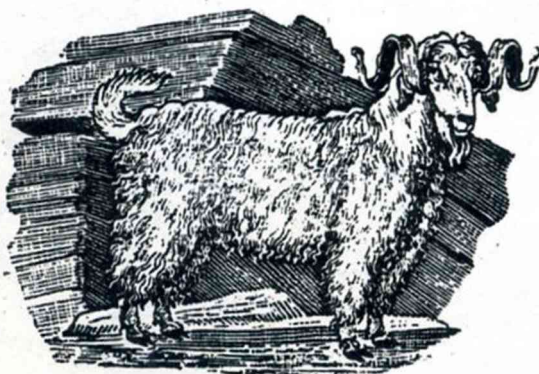
FROM JENNIE TASHEFF:




Novalene Ross from the Wichita Art Museum has asked us to give weaving or spinning demonstrations there while fourth graders are touring exhibits, including Fiber Directions '82. Dates and times follow of the scheduled tours. It would not be necessary to weave or spin the entire time as the children will only be present in our exhibit area a few minutes of the 45 min. tour.

Call Jennie at 267-1701 to schedule a time to work. Your help is appreciated.

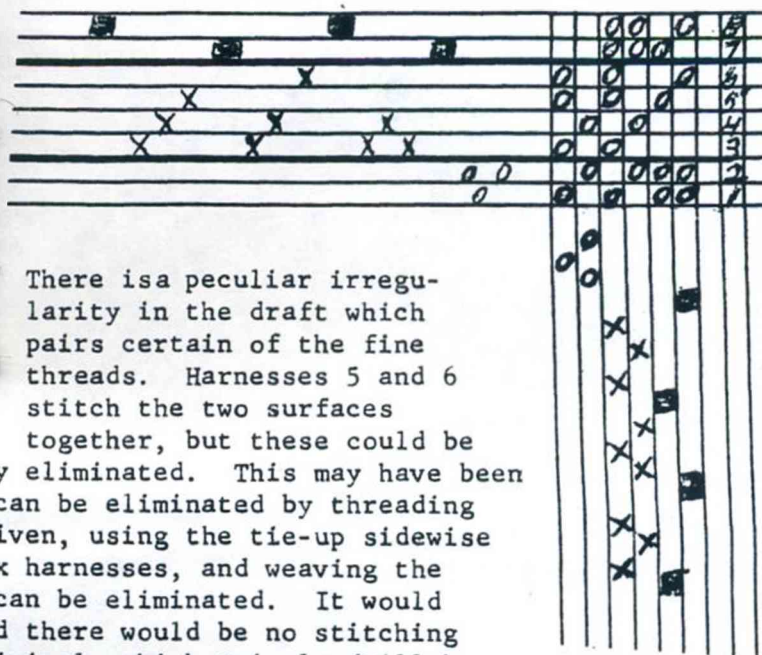
Tuesday, Feb. 9	10:30 a.m.
	1:30 p.m.
Wednesday 10	1:30 p.m.
Thursday 11	1:30 p.m.
Tuesday 16	1:30 p.m.
Wednesday 17	1:30 p.m.
Friday 26	1:30 p.m.



**The Blue Warp, Inc.**
Spinning & Weaving
939 Parklane
Wichita, KS 67218
We're On The Move!
Watch for our opening
Monday, March 1st
6434 E. Central
in Normandie Center

SWATCH OF THE MONTH:

Helen Canzoneri has provided swatches of her coat material woven of Paternayan yarn in black and grey and the finer threads of Cum homespun in black and white. Her weave was taken from one of Harriet Tidball's Monographs entitled "The Double Weave, Plain and Patterned." Hers is from an unusual double weave blanket, Scottish in origin, reported to be a copy of an early Tudor blanket in the Victoria and Albert Museum. Further, we quote, "It is a three-to-one fabric with three ends of fine yarn on the back to one of heavy on the face. The draft is given here.



There is a peculiar irregularity in the draft which pairs certain of the fine threads. Harnesses 5 and 6 stitch the two surfaces together, but these could be retained and the irregularity eliminated. This may have been an ancient error. The flaw can be eliminated by threading to the treadling draft, as given, using the tie-up sidewise for eight treadles on the six harnesses, and weaving the draft. Or treadles 5 and 6 can be eliminated. It would then be woven as drawn in and there would be no stitching between surfaces. In the original, which Pringle (Mills) makes in several color combinations, the heavy threads are of a different color every fourth repeat in both warp and weft, making a very decorative check pattern."

FROM CAROL JONES:

Just prior to our last Guild meeting, I received a letter from Char Gray-Shoffner, editor of "The Beat," the newsletter of the Handweavers Guild of Boulder, Colorado. She was interested in exchanging newsletters with us. Elizabeth Kolling-Summers (Esther's daughter) is an active member of that guild and suggested this exchange. We have since received their January newsletter which is posted on our bulletin board by the door in Studio 4. Char also extends an open invitation to any of us who might be visiting in the Denver area to attend their Guild meeting. They usually meet on the second Monday of each month, beginning at 9 a.m. and ending around 11:30 a.m., at the Atonement Lutheran Church, Inca Parkway and Baseline Road, Boulder. For directions you may call her at 642-7371, home or at 426-6000, work.

Thank you for the open invitation, HGB. We of WHS&DG extend to your members the same invitation. We meet the first Wednesday of each month at 7:30 p.m. at the Wichita Art Association, Studio 4, 9112 East Central. For directions call Carol Jones (316) 744-0821 or Barbara Ratner (316) 681-1552.

In reading one of my Christmas gift books, my interest was caught by some remarks made by Louise Nevelson in her book Dawns / Dusks where she describes her reaction in two instances to fiber. The first account occurs during a period of her life following the birth of her son Mike in 1922 when she says,

"I went into a depression, right down to the tip of my toe. . . One day I walked down 57th Street, and at the time they had many stores with antique furniture. Well, somewhere along the line I spotted, like a sunburst, two antique French chairs in the window. They had yellow satin covers with no design at all. The shade of yellow and the touch of satin and the softness of that satin was an instantaneous healing. It cured me more than anything else could have cured me."

In a second accounting she tells of her visit to the Metropolitan Museum where she saw an exhibition of Japanese Noh robes. Here she says,

"Let me say that there are things in us that we find parallel outside us, so these Noh kimonos. . . each robe was a universe in itself. I can tell you exactly where they were. The exhibition was on the south side on the balcony, and the manikins didn't have any heads, and I went upstairs and I looked at them--the forms--and then I looked at the material. Some had gold cloth with medallions, and the cloth was so finely woven that the likes of it I never saw, and then the medallion was gold so it was gold on gold. I looked and I sat down without thinking and I had a barrel of tears on the right eye and a barrel of tears on the left eye. . . and then my nose was running so there was another barrel of that, and I wanted to go to the bathroom, so there was another barrel. Everything was open. And then I knew and I said, oh, my God, life is worth living if a civilization can give us this great weave of gold and pattern. And so I sat there and sat and wept and wept and sat."

"The thing that hit me was that they used it with such elegance. It was the reverse of what people think, that gold material was a little vulgar. It was made out of the thinnest of sheer-thin thread, it was so fine. So that the light and shade were of that refinement. It was the height of human refinement, and beyond that it would fall apart. And I thought, well, if there's been a civilization of this development, then we have to recognize that there is a place on earth that is an essence. I went home and it gave me a whole new life."

It impressed me that she was so struck by these particular pieces of fiber and the impact they had on her life. I thought some of you might enjoy the excerpts as well.



HERITAGE HUT

8037 PEACH TREE

682-4082

Tahki, Stanley Berroco, Navajo Wools,
Unger, Reynolds, and mill ends.

Approx. 200 lbs. in natural and dyed
wools, novelty cotton loop and cottons,
and Berbers due in Feb. 5.

Clothing workshop starts March 24.

UPCOMING CALENDAR:

- Feb. 3 Guild meeting, 7:30 p.m.
- 4 Color Study Group, 10 a.m.-noon (sack lunch optional)
- 7 Opening reception at Wichita Art Museum, 2-4 p.m., for Kansas Fiber Directions '82 (Show up Feb. 7 thru March 7)
- 9 Weaving/spinning demonstrations, Wichita Art Museum, 10:30 a.m. and 1:30 p.m.
- 10 Weaving/spinning demonstrations, Wichita Art Museum, 1:30 p.m.
- 11 Color Study Group, 10 am.-noon (sack lunch optional)
- Weaving/spinning demonstrations, Wichita Art Museum, 1:30 p.m.
- 12 Daytime spinning meeting, noon on, bring sack lunch & wheel
- 16 Weaving/spinning demonstrations, Wichita Art Museum, 1:30 p.m.
- Spinning meeting, 7 p.m.
- 17 Weaving/spinning demonstrations, Wichita Art Museum, 1:30 p.m.
- 18 Color Study Group, 10 a.m.-noon (sack lunch optional)
- 25 Color Study Group, 10 a.m.-noon (sack lunch optional)
- 26 Weaving/spinning demonstrations, Wichita Art Museum, 1:30 p.m.



ANNOUNCING:



Follow-up study group to Peg McNair's Color Workshop. We will be continuing to do homework exercises and then critique them as a group. We will be meeting on Thursday morning from 10-12 Bring a sack lunch if you can stay longer. The first session will be January 28 and will continue then on Thursday mornings from 10-12 through March 4 (6 sessions in all).

Any and all Guild members are welcome to come and learn. Those of us who were in the color and design workshops want to share our newly gained knowledge. Try and come the first time and see if this would interest or benefit you.

Any ??'s, call Carolyn Kretzer at 838-9576. See you there!

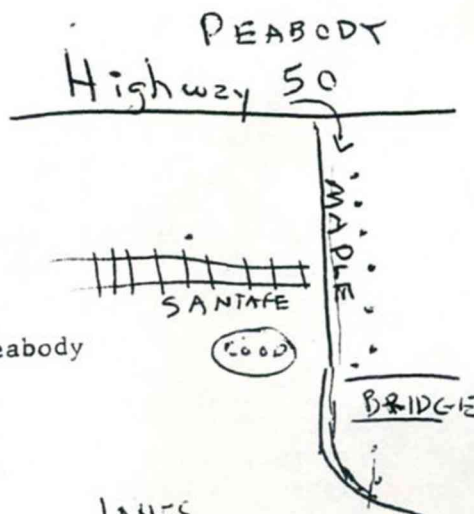
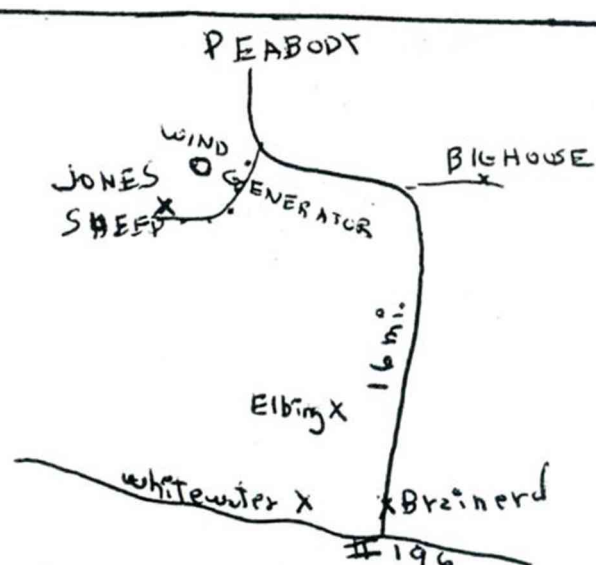
FROM MARILYN JONES:

Spin-In will be on Saturday, March 6.

This will be in our new barn.

Dress accordingly; there is no heat

From I-35 out of Wichita to Newton,
then east on Highway 50 to Peabody

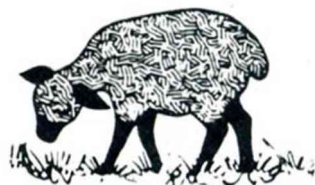


- OR -

From the Wichita Art Association--
Go north on Webb Road to Comatara sign, go
east and intersect Furley Road, go north to
Highway 196. Go by Whitewater to Brainerd
(just a spot with elevator), go north by
Remington School for 16 miles. The road curves
west, straight for about 1 mile, then curves back
north. Turn south (left) on this dangerous curve.

FROM LILLIAN RUBERSON:

Notice to Spinners: Daytime meeting, Friday, February 12, at noon. Bring
your lunch and wheel to Studio 4. We'll have lunch
and spin.



Regular spinning meeting, Tuesday, February 16, 7 p.m.,
in Studio 4.

Spin-in at Jones Sheep Farm Barn, Peabody, Kansas, Saturday, March 6, 9-12 and
1-3 p.m. Learn about different breeds of sheep and the spinning wools they
produce. Bring your wheel, carders, plastic bags, magic markers, and your
lunch. Fees: \$7 for the class plus amount of wool you purchase. If you've
never spun fleece direct from the freshly sheared sheep, here's a great
opportunity.

Name _____

Address _____

Fee: \$7.00

Reserve your spot by filling out and returning to: Lillian Ruberson
1112 Barlow
Wichita, KS 67207
(316) 683-6909

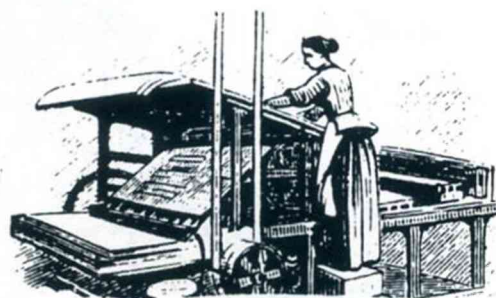
ENROLL NOW

CLOSING NOTES FROM CAROL

In preparing various items for the newsletter, I was especially struck at the number of opportunities for Guild activities during February. I count 14 dates listed and that mounts up to something scheduled for one half of February's total days. We are busy, true, but with a variety of events. Come out and participate. You'll be glad you did.

I can't close without saying how great the color workshop of Peg McNair was. We became increasingly aware of the way in which color works. Surely too, the design workshop was an enriching experience for those in that class. The follow-up study group should continue the momentum built from these workshops and promote further learning.

GREAT



Wichita Handweavers, Spinners & Dyers
c/o Carol Jones, News Editor
4518 Dundee
Wichita, KS 67220

